

**SATO**  
Powered On Site /

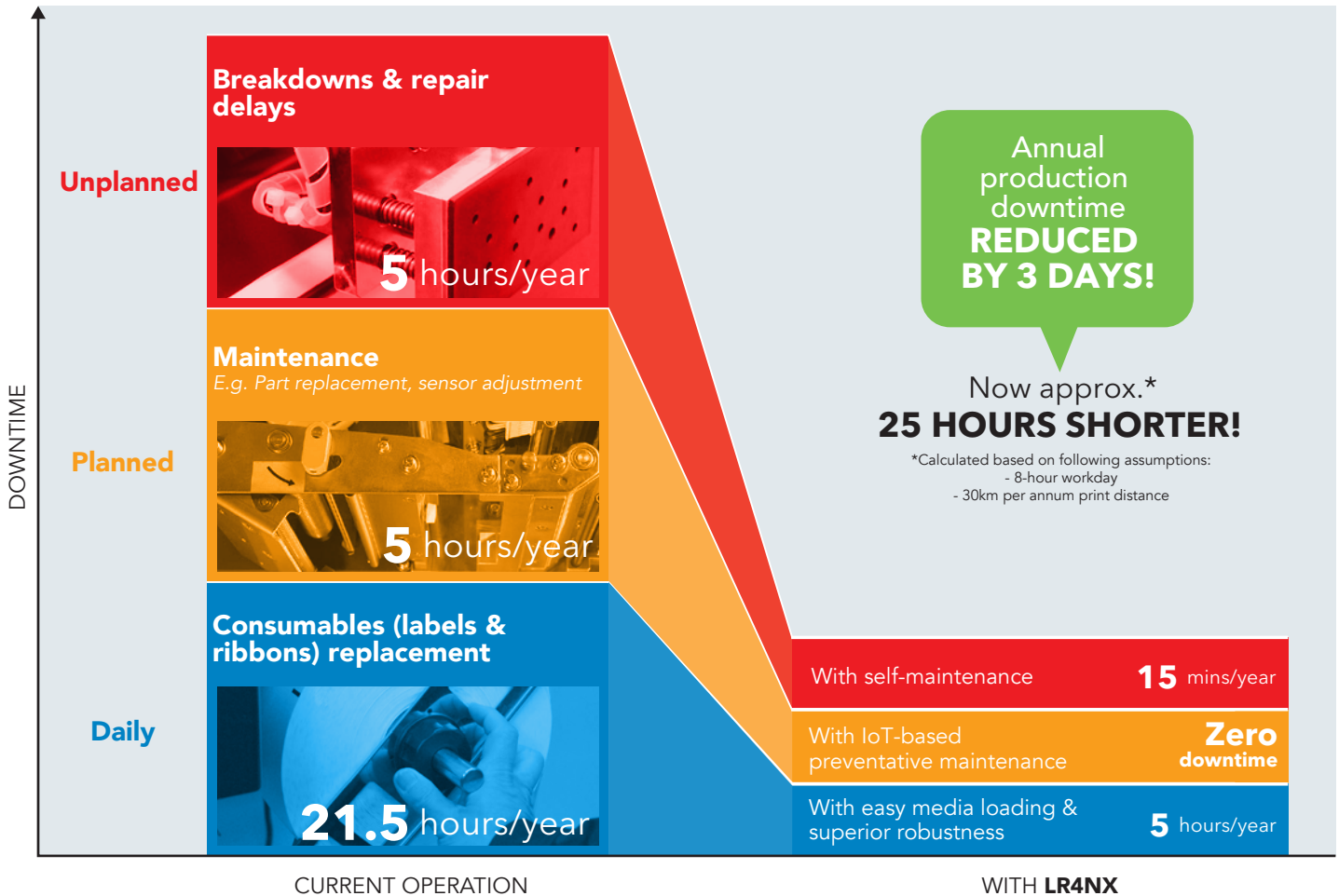


LR4NX



[sato-oceania.com](http://sato-oceania.com)

# Robust Design and IoT-enabled to Minimise Downtime!



CURRENT OPERATION

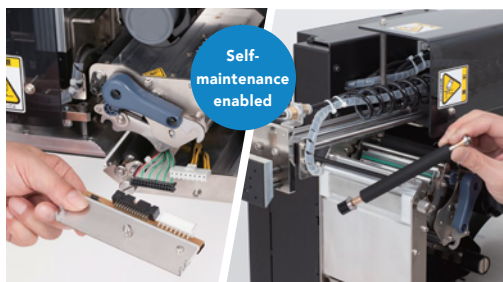
WITH LR4NX

## STREAMLINE DAILY OPERATIONS

### Robust design for industrial printing

- ✓ Thermal head and platen roller - 1.6 times\* more durable than previous models.
- ✓ Large ribbon roll capacity - 50% reduction in change frequency.
- ✓ Easy, tool-free replacement of service parts

\*Based on internal testing



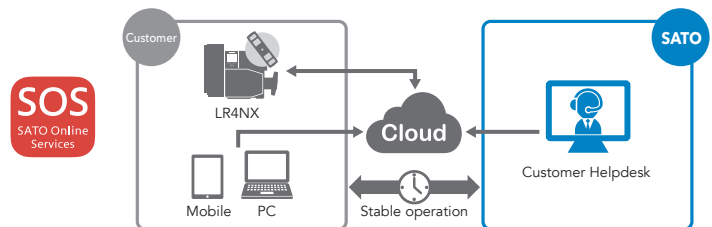
Thermal head

Platen roller

## PREVENT BREAKDOWNS BEFORE THEY OCCUR

### IoT-based preventative maintenance for stable operations

Monitor printer operations 24/7 & notify when part needs to be replaced, while keeping operations running.



## TROUBLESHOOTING

### On-the-spot fixes for problems

Send operators email notifications and video tutorials/instruction manuals to fix errors promptly



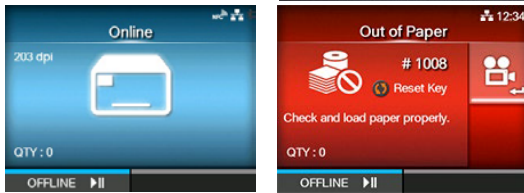
# User-friendly features for greater operational efficiency!

## EASY AND INTUITIVE TO USE

### 3.5-inch large LCD screen.

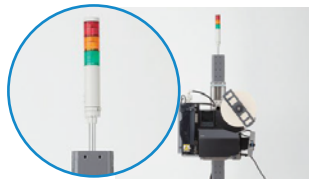
Guidance videos to help users e.g. load labels, ribbons or replace service parts easily.

Different display colors to show printer status at a glance.



### 3-color stack light

Quickly alert users to high priority conditions from a distance.



## PACKED WITH USEFUL FUNCTIONS

### Accurate and stable operation for peace of mind

- ✓ Head cleaning notification
- ✓ Command error indication
- ✓ Password lock
- ✓ Printer settings backup / clone



### Multi-Language Capability

- ✓ Support 31 display and 47 print languages.
- ✓ Also contains built-in Unicoded scalable fonts



### Next-Generation Smart Printing

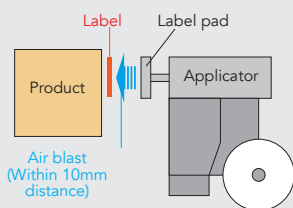
- ✓ Support Application-Enabled Printing (AEP) - Connect printer directly to peripheral devices for standalone printing or PLCs for integrated printing without costly computers
- ✓ Auto detection of emulation languages (SZPL, SIPL, SDPL)

## Available in a wide range of variations to meet different customer needs

Customise your system by choosing from a variety of application methods, mounting points and machine configurations.

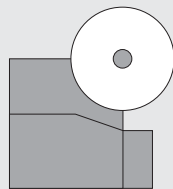
### AVAILABLE MODELS

#### CYLINDER JET (CJ-TYPE)



Extends cylinder arm and uses air to blow label onto the surface of moving products

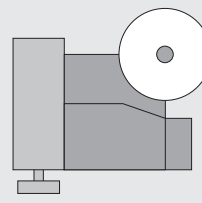
#### ONE TYPE AVAILABLE WITHOUT CYLINDER



This shows left hand without cylinder.

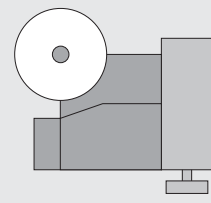
### MACHINE CONFIGURATIONS

#### LEFT-HAND



Label feed direction

#### RIGHT-HAND



Label feed direction

**SATO  
AEP**  
Application  
Enabled Printing

SATO LR4NX is based on SATO unique AEP Technology.

SATO AEP allows for tailor-made labelling applications including PC-less printing, direct connection of peripherals such as keyboards, scanners and scales for data input.



# Technical Information

## PRINTING SPECIFICATION

Model Name	LR4NX L (Left Hand); LR4NX R (Right Hand)	
Printing Method	Direct Thermal / Thermal Transfer	
Print Resolution	8 dots/mm (203 dpi); 12 dots/mm (305dpi)	
Max. Print Speed	10ips	
Max. Print Area	Width	104mm (4")
	Length	2500mm (98.4") (203dpi); 1500mm (59") (305dpi)
Internal Memory / Receive Buffer	User Area: Max. 619MB	
	Receive Buffer: Max. 2.95MB (Buffer near full at 2MB, released at 1MB)	
Application Method	CJ (Cylinder Jet) Type: Cylinder stroke standard 200mm (valid stroke is within 182mm) Blowing distance up to 10mm, conveyor speed up to 21m/min	

## CONSUMABLE SPECIFICATION

Label Type	Roll paper	
Label Thickness	140 ~ 240µm (Including Liner)	
Label Shape	Diameter	Core inner diameter: φ76.2 mm (φ3") Outer diameter: φ280mm (φ11")
	Wind Direction	Face-in / Face-out
Label Size (Without Liner)	Width	30 ~ 117mm (1.1" ~ 4.6") (Depends on application method)
	Length	30 ~ 120mm (1.1" ~ 4.7") (Depends on application method)
Ribbon	Size	Max. Length: 600m (236") Width: 39.5 ~ 111mm (1.5 ~ 4.3")
	Other	Wind Direction: Face-in / Face-out Core Diameter: φ25.4 mm (φ1")

## FONTS & SYMBOLOGIES

Internal Fonts	Standard Bitmap	U, S, M, WB, WL, XS, XU, XM, XB, XL, OCR-A, OCR-B, Kanji, Chinese (GB18030, Big 5), Korean (KSX1001)
	Scalable Fonts	15 SATO Fonts Single and Double Byte Fonts (Korean, Chinese, Japanese)
Barcode	Linear	UPC-A, UPC-E, JAN/EAN, CODE39, CODE93, CODE128, GS1-128(UCC128/EAN128), CODABAR(NW-7), ITF, Industrial 2of5, Matrix 2of5, MSI, Customer Barcode, POSTNET, UPC add-on code, BOOKLAND, USPS Code, GS1 DataBar Omnidirectional, GS1 DataBar Truncated, GS1 DataBar Stacked, GS1 DataBar Stacked Omnidirectional, GS1 DataBar Limited, GS1 DataBar Expanded, GS1 DataBar Expanded Stacked
	2D Symbolologies	PDF 417, Micro PDF, Maxi Code, GS1 DataMatrix, QR Code, Micro QR, Data Matrix (ECC200), Aztec
Composite Symbols	GS1 DataBar Composite, GS1 DataBar Truncated Composite, GS1 DataBar Stacked Composite, GS1 DataBar Stacked Omnidirectional Composite, GS1 DataBar Limited Composite, GS1 DataBar Expanded Composite, GS1 DataBar Expanded Stacked Composite	

## INTERFACE CHARACTERISTICS

Interface	Data Interface: LAN 10BASE-T/100BASE-TX (IPv4/IPv6, SNMPv1~v3 MIB- II, FTP, NTP, LPR, DHCP, Http/Https), RS-232C, IEEE1284 For configuration: USB 2.0 High-speed TypeA
External Signal Interface	Connector: 20 Pin (Terminal block: M3) and EXT (14 Pin)
Emulation	SZPL, SIPL, SDPL

## OPERATING CHARACTERISTICS

Air (Under supply of oil-free, moisture-free clean air)	Pressure	0.45 ~ 0.5 MPa (4.5 - 5.0 Kg/cm <sup>2</sup> )
	Consumption	Approximately 80 litres/min (Depends on application method, label size, application process capacity, and other conditions)
Environment	Operating	5~35°C/25~85%RH (without condensation)
	Storage	-5~60°C/25~90%RH (without condensation)
Electrical	Universal Auto-ranging Power Supply, 100-240 VAC +/-10%, 50/60 Hz	
Power Consumption	Peak: 190W/190VA, Standby: 20W/30VA	
Dimensions	W612mm×D325mm×H546mm (W24,09"×D12.79"×H21.49")	
Weight	Approximately 29.5kg (65.03lbs) (CJ Type)	

## MISCELLANEOUS

Agency Approvals	RoHS, KC, IEC60950-1, EN60950-1, EN55032 Class A, EN55024
Features	Guidance Videos, 31 Language Display on LCD, Notification of Cleaning Timing, Head Check, Real Time Clock(Optional), Password Lock, External Logo and Font Download, Turn-off LCD, Stand-by, Status Reply and more

## OPTIONS

Accessories	Object Detection Sensor, I/O Relay Box, Pressure Roller and more
-------------	--

Contact us today for a free expert consultation:



### SATO Australia Pty Limited

Regional Headquarter - VIC  
6 Federation Way, Chifley Business Park,  
Mentone VIC 3194, Australia

Satellite Sales Office - NSW  
Level 1, Unit 17, 75 Corish Circle,  
Banksmeadow NSW 2019 Sydney, Australia

### SATO New Zealand Limited

Regional Sales & Manufacturing  
30 Apollo Drive, Mairangi Bay,  
Auckland 0632, New Zealand



For more information, please contact your local SATO office, or visit: [sato-oceania.com](http://sato-oceania.com)

All information in this leaflet is accurate as of April 2024.  
Product specifications are subject to change without notice.  
Any unauthorized reproduction of the contents of this leaflet, in part or whole, is strictly prohibited.  
All other software, product or company names are trademarks or registered trademarks of their respective owners.